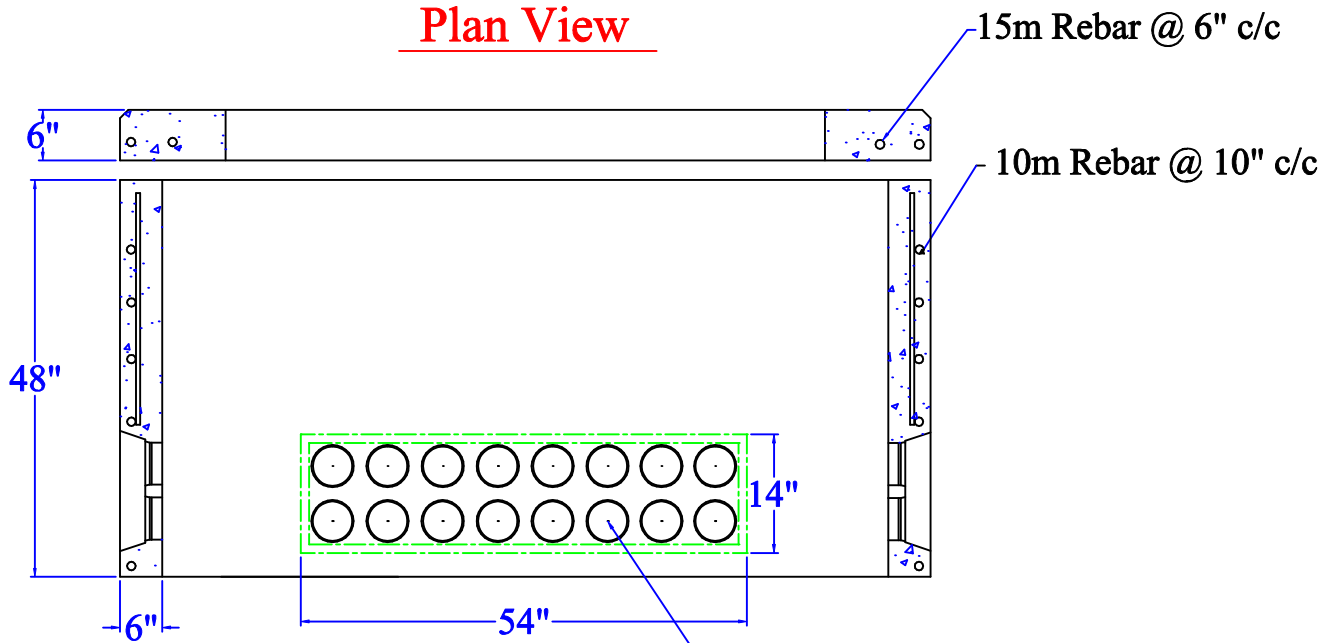


**Plan View**



**Section A-A**

Polyloc Pipe Seals (16 on sides, 12 on ends)

**Notes:**

1. Concrete 32 Mpa min. Air 5-7%
2. Approx. weight 4230 kg.
3. Top pad thickness can be increased if ness.
4. Unit can be set in place by Acton Precast truck if site is ready at time of delivery.

**B9660 & P9660  
Switchgear Base and Pad**

**Acton Precast Concrete Limited**